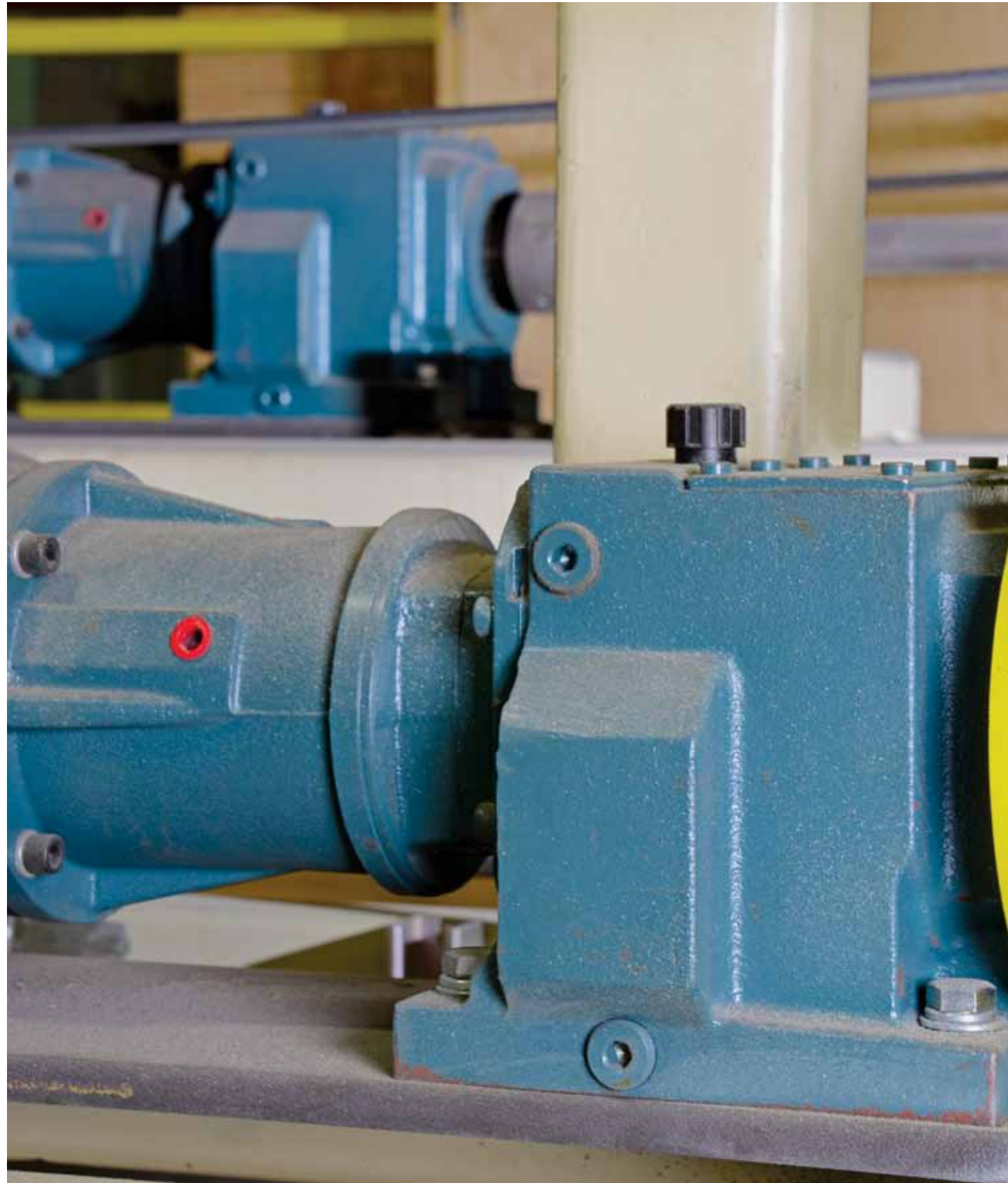
A large industrial mill with stacks of plywood and machinery. The scene is filled with stacks of plywood panels, some leaning against machinery. In the foreground, a large blue roll of material is visible. The background shows the complex structure of the mill with various pipes and beams.

**BALDOR'S DODGE®
QUANTIS®
Build Center Delivers**

*Keeping Panels Turning
at Oregon Mill*



When States Industries needed Baldor's Dodge Quantis ILH reducers in a hurry, the Reno Quantis Build Center delivered. Seven units, including these two, were built to customer specifications and were delivered within 48 hours, keeping the company's machine build on track.

As a lead millwright for States Industries, a Western Oregon producer of premium hardwood panels, Chris Stevens is responsible for leading a maintenance shop team of mechanics and electricians that keeps the mill running. When the mill needs a new piece of equipment that can't be purchased, it falls to this same team to design and build it.

The company wanted to replace the existing poly line, a process where blemishes in wood panels are filled, placed on a panel turner to dry, and then sanded. It was a time-consuming process because a forklift was required to move the panels from one step to the next. The maintenance shop team was asked to build a machine that tied the poly

line, the panel turner and the sanding line into one continuous process.

The capital project was released in phases, and Stevens says the team was on target to meet the deadline when demand for the product increased, and the project was moved up. Based on years of experience with Baldor's Dodge Quantis gearboxes used throughout the mill, Stevens knew he was going to install these gearboxes on the new machine, but he had been waiting on key information regarding the other equipment before placing the Quantis order.

"We couldn't preorder the gearboxes because we had to wait until the sander was approved," explained Stevens. "With

that piece in place, we could then determine how many panels we could put through the machine and at what speed. As soon as all of this was figured out, I needed to get the project done. For me, it then became a mad rush to get all the Quantis units we needed."

Stevens' first call was to John Davisson, branch manager for Motion Industries in Eugene, Oregon. The two have a strong partnership and immediately got to work to determine the ratio, speed and design of the gearbox, configuring the right type and size unit to support the application.

"The first thing I did was get a hold of my local Dodge Field Sales Engineer Derrick Hoyle to find out



Baldor's Dodge Quantis reducers help power the newly built equipment that ties the poly line, the panel turner and the sanding line into one continuous process.

what Baldor's Dodge Quantis Build Center could do for this customer," says Davisson. "I was aware of some of their capabilities, but I needed to know just how quickly they could build and ship these units."

Davisson needn't have been worried because the Reno Quantis Build Center is prepared to deliver in situations just like this. With a large inventory of components, trained technicians can build gearboxes with a wide variety of power ratings, ratios and shaft configurations. These capabilities meant that seven Quantis units were built and shipped within 48 hours of the order being placed. A turn-around time that impressed Stevens.

"We were able to design the gearboxes the way we wanted them and still received all of them so quickly."

Chris Stevens,
lead millwright,
States Industries

"I really didn't expect them to be delivered in this short time frame," says Stevens. "So when the seven gearboxes showed up at my door within 48 hours, I was really surprised, and the first thing I did was call John to tell him the good news. We immediately began installing them, which was great because this meant we could keep our project moving forward."



This size 108 RHB Quantis reducer replaced a competitor's gearbox so operators can better control the speed of the transfer belts on a sanding machine. Some wood panels need to be sanded quickly while others need to be sanded more slowly. With the Quantis gearbox installed, operators can now utilize the full speed range of the sander.



States Industries LLC, founded in Eugene, Oregon in 1966, is a premier manufacturer of hardwood plywood and specialty panel products. Its primary manufacturing facility has the capacity to manufacture 300,000 panels per month and includes three multi-opening presses, two sanding lines, a sizing sander and the industry's most comprehensive finishing lines.

What was even more impressive, according to Stevens, is that the gearboxes he ordered were not standard, off-the-shelf products, each of them was built to his exact specifications.

"We actually thought it would take a lot longer to get exactly what we wanted," says Stevens, "but it didn't. We were able to design the gearboxes the way we wanted them and still received all of them so quickly – that's what I find amazing."

The new equipment is up and running, and the gearboxes are performing just as Stevens knew they would. Based on experience, he expects them to provide years of trouble-free performance. Not only is Quantis a reliable product, Stevens says they are also his top choice because of the flexibility of the product.



Lead Millwright Chris Stevens says he knows from experience that Dodge Quantis units are rugged and reliable. The proof, he says, is this Quantis ILH unit on a roll coater machine, one of the toughest applications in the mill. Despite the shock load and machine vibration, which has cracked the feet of other gearboxes, this Quantis reducer has performed without a problem for the past eight years.

"You can mount them in any location," says Stevens, "up, down, left or right. We have units mounted upside down, and they work great. They all just keep running, and they are easy to maintain. I'm a firm believer in the product, and I would recommend them to anybody."

He's also a believer in the Reno Build Center and its ability to serve customers quickly. He says he already has plans to call on them again when he needs to replace older competitive units that are close to the end of their lives.

"John and I have already discussed what I need, and we know the team in Reno can build them," says Stevens. "Now that I see how fast they can build and ship units, I don't need to store inventory. I'm not afraid of waiting until I need one because I'm confident I can get one in 24 hours."

Baldor's Dodge® Quantis® Build Center in Reno is Ready to Serve the West

Baldor's Dodge Quantis is a modular-designed gearing solution, engineered for flexibility, greater torque density in a compact housing configuration and increased horsepower capability from ¼ to 75 HP.

The product, ideal for a wide range of applications, is manufactured in Belton, South Carolina. Now with the addition of Baldor's Dodge Quantis Build Center in Reno, Nevada, customers in the western half of the United States have quick access to this popular product.

With a large inventory of preselected components, trained technicians can build gearboxes with an extensive variety of power ratings, ratios and shaft configurations.



With a large inventory of preselected components, trained technicians at Baldor's Dodge Quantis Build Center in Reno can build gearboxes with an extensive variety of power ratings, ratios and shaft configurations.



To ensure top quality, each Quantis reducer is tested prior to shipping.



With a variety of units in stock, and the flexibility to build to customer specifications, Baldor's Dodge Quantis Build Center is ready to deliver.

Input options include integral motors, clamp collar style, or 3-piece coupled. Output options include solid shaft, straight hollow bore and the exclusive Dodge Twin Tapered bushing system.

Baldor's Dodge Quantis Build Center can ship product within 24 to 48 hours from receipt of order. The center's Reno location makes it ideal to serve

customers in California, Washington, Oregon, Nevada, Arizona, Idaho, Utah, Montana, Wyoming, Colorado and New Mexico.

With a variety of units in stock, and the center's flexibility to build to customer specifications, the Reno Quantis Build Center is ready to deliver.

Keeping Industry Up and Rolling



BALDOR • DODGE

Nothing is more frustrating than shutting down a machine, even an entire production line because of a bearing failure. Baldor • Dodge® bearings represent the best quality and reliability industry has to offer. From punishing mining applications to corrosive washdown environments, and everything in between, there's a Baldor • Dodge bearing perfectly suited for the task at hand.

Keep your machinery healthy, strong and efficiently rolling along with the widest choice of industrial bearings in the world...only from Baldor • Dodge.

baldor.com 479-646-4711

- Unmatched Quality
- Superior Reliability
- Energy Efficient
- American Made Since 1880

BALDOR
A MEMBER OF THE ABB GROUP